

*AludecoR*  
Metal Composite Panel

M A S

T E R

MINERALS

「 Master Shade Card 」

As a national leader in the metal composite panel industry, Aludecor stands at the forefront of innovation, quality, and sustainability. Our dedication to perfection earned us the European Aluminium Award - ESQR (European Society for Quality Research). With over two decades of expertise, we have consistently led the way in redefining modern architecture through our cutting-edge aluminium composite panels (ACPs). Our state-of-the-art facilities include seven advanced lamination lines, giving us the unmatched capacity to manufacture 9.6 million square meters annually. Aludecor is the only company to have a palletising line for manufacturing FR granules, ensuring us to advance our leadership in safety and technology. Trusted by architects and industry professionals nationwide, we have beautified over 2 lac projects across India and are proud of more than 10,000 projects that have stood the test of time, lasting over a decade. By blending aesthetic excellence with high-performance solutions, Aludecor continues to inspire creativity and elevate the built environment, all while delivering versatile and durable cladding solutions that meet the evolving demands of modern architecture.

WALL PANNELLING | CLADDING | FACADE  
SIGNAGE | CABINETS | DOORS  
PARTITIONS | FURNITURE | AUTOMOTIVE PARTS



EXCEPTIONAL  
TEXTURES  
WHERE ART  
KNOWS NO BOUND



- ◆ 1st ACP manufacturer with NABL accredited R&D FR Lab (as per ISO/IEC 17025:2017)
- ◆ Only company in India to have a palletising line for manufacturing FR granules
- ◆ Over 22 years of championing the metal composite panel industry in India
- ◆ Available in over 250 cities across India & select international presence
- ◆ Over 9.6 million square meters annual production capacity
- ◆ 500+ shades, personalised to fit your world
- ◆ Over 2 lac projects beautified in India
- ◆ 7 State-of-the-art lamination lines
- ◆ 1st Aluminium coil coaters in India

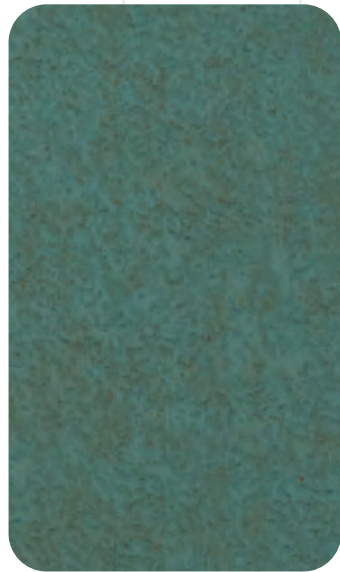


SPECIALTY FINISHES



# RUGGED METAL

Crafted to echo the raw, industrial charm of weathered steel and aged iron, the Rugged Metal series stands as a tribute to strength, resilience, and character. With its textured surfaces and deep, oxidized tones, this collection brings a bold, tactile dimension to contemporary design. Perfect for façades, interiors, or accents, Rugged Metal evokes a sense of timeless durability fused with modern edge.



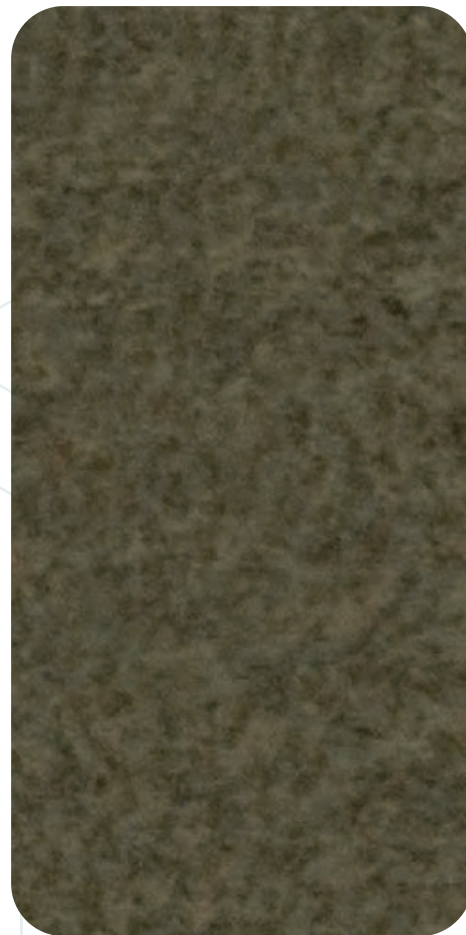
**RM 08**  
Oceanic Copper



**RM 07**  
Hammered Copper



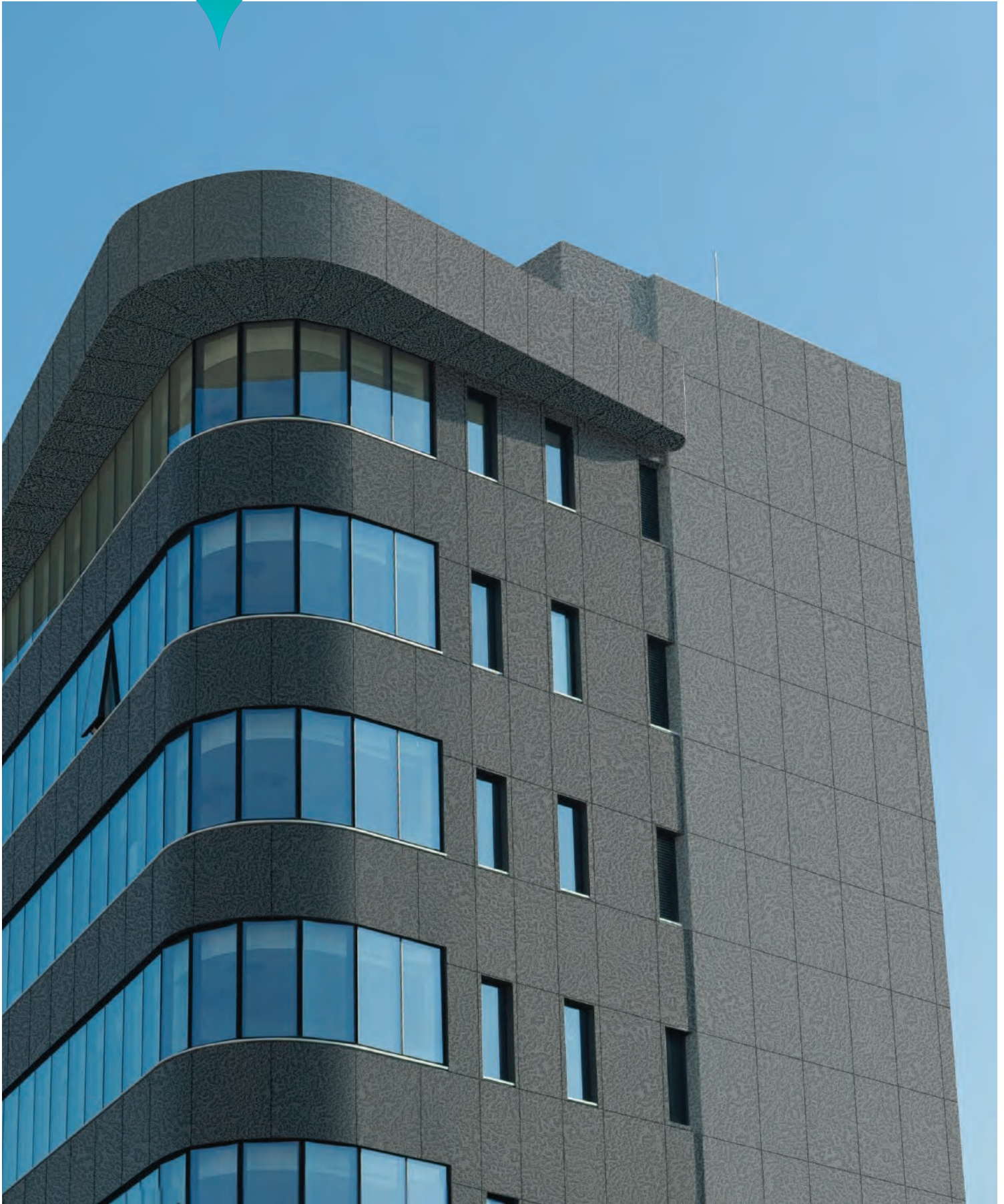
**RM 06**  
Desert Bronze



**RM 05**  
Hammered Brass

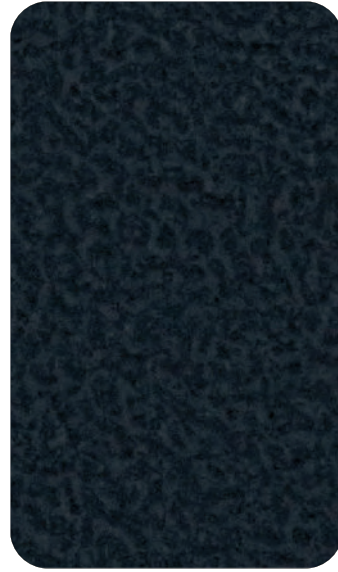


FORGED AESTHETICS





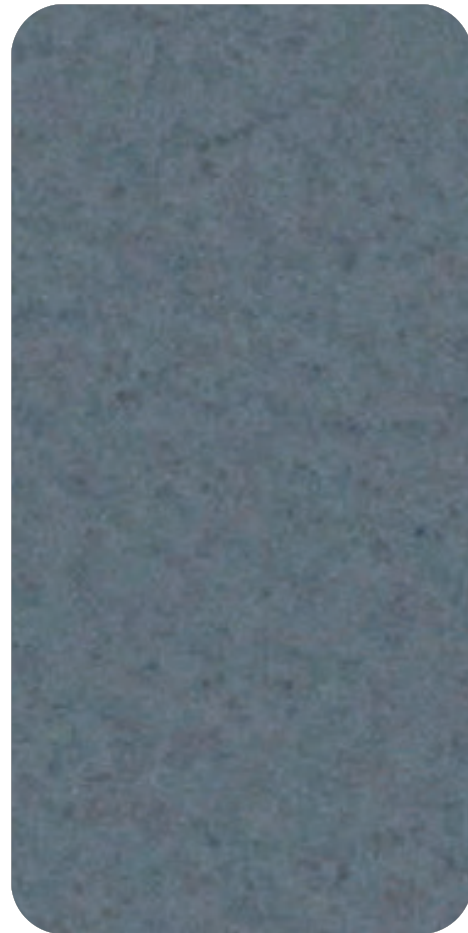
**RM 04**  
Hammered Bronze



**RM 03**  
Hammered Titanium



**RM 02**  
Hammered Galvalume



**RM 01**  
Hammered Aluminium



WEATHERED BEAUTY



# WABI SABI

Rooted in the Japanese philosophy of finding beauty in imperfection, the Wabi Sabi series celebrates textures marked by time, weather, and nature. With earthy tones and organic patterns, this collection captures a quiet elegance—raw yet refined. It invites you to embrace the imperfect, the impermanent, and the authentic in architectural design.



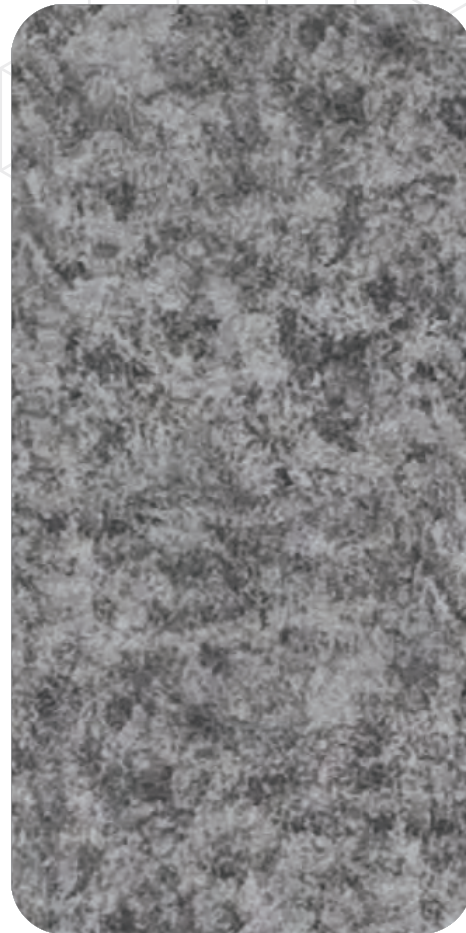
**MA 10**  
Antiq Slate



**MA 09**  
Antiq Ebony



**MA 08**  
Beton White



**MA 07**  
Beton Black



TIMEWORN AESTHETICS



**MA 04**  
Beton Copper



**MA 02**  
Beton Smoke

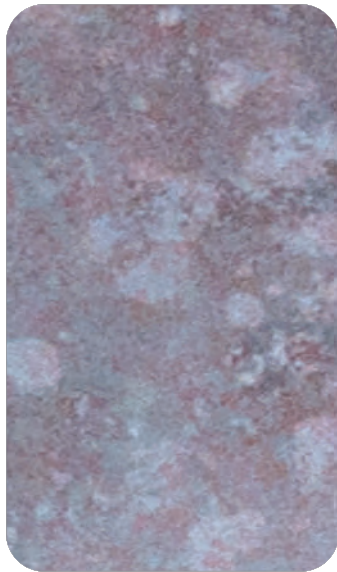


**MA 01**  
Beton Silver

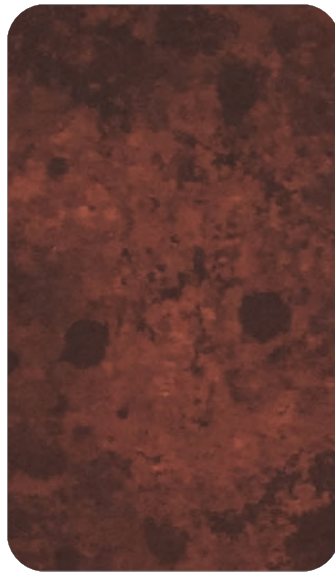


**CS 09**  
Rustiq Zinc

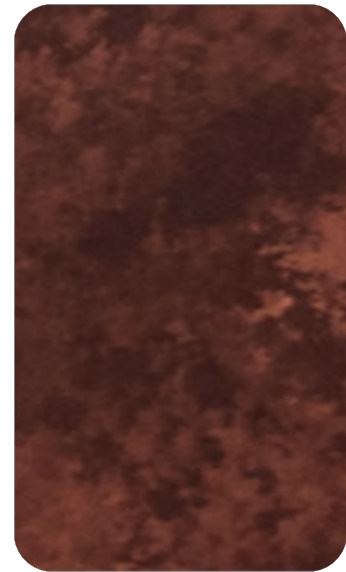




**CS 08**  
Fossil Zinc



**CS 07**  
Rugged Red



**CS 06**  
Rugged Brown



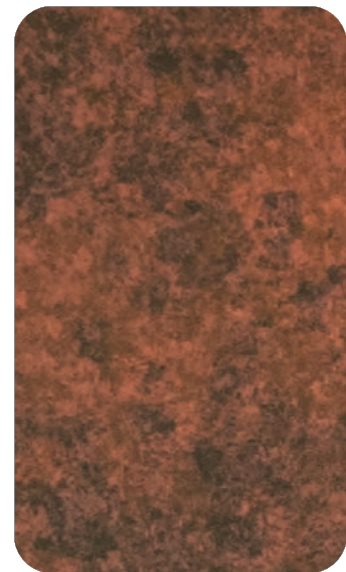
F  RGOTTEN ELEGANCE



**CS 05**  
Rugged Orange



**CS 04**  
Rugged Yellow



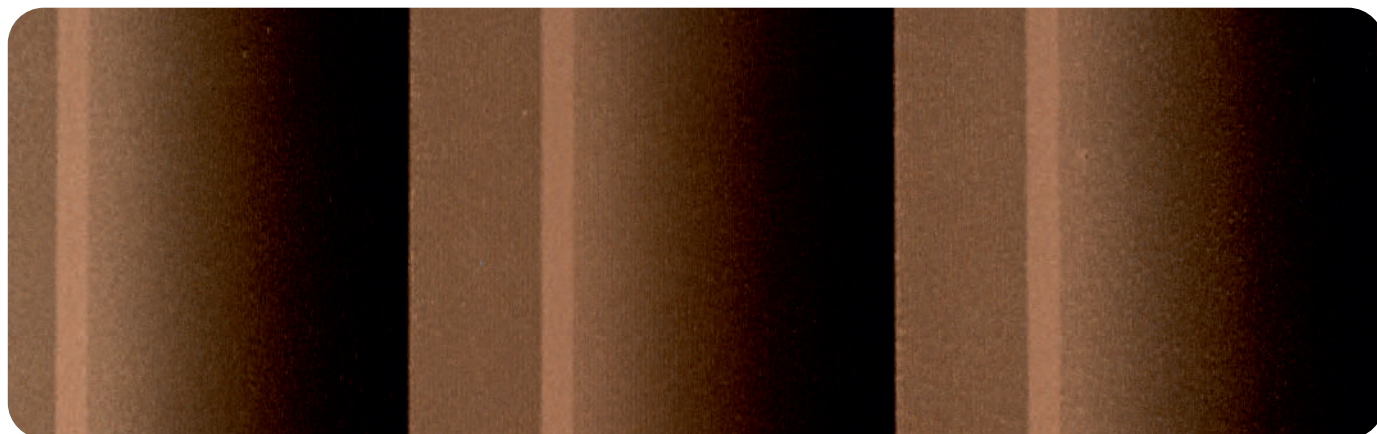
**CS 01**  
Patina Copper



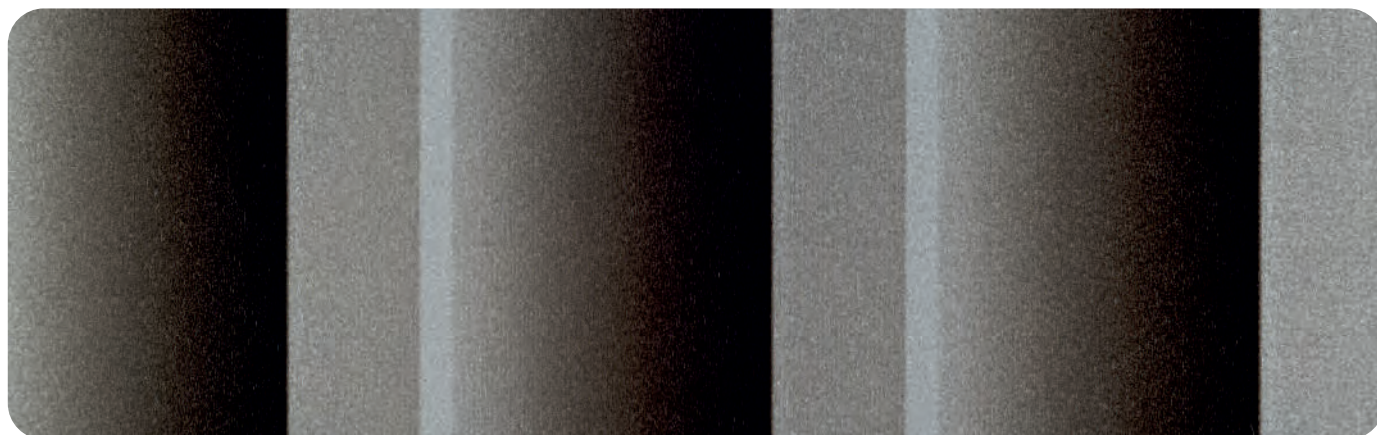


# CORTINA

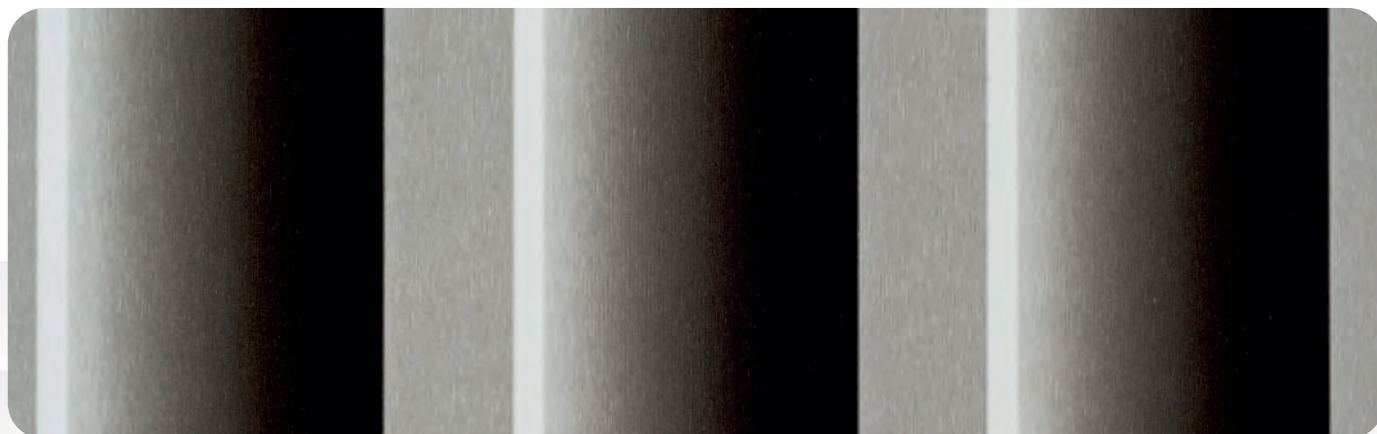
Cortina is a celebration of classical form reimagined for contemporary spaces. Inspired by the sculpted rhythm of architectural columns, this series blends structural elegance with modern depth. Its fluted textures and earthy tones bring a refined sense of symmetry and grace, creating timeless surfaces that speak to heritage, harmony, and high design.



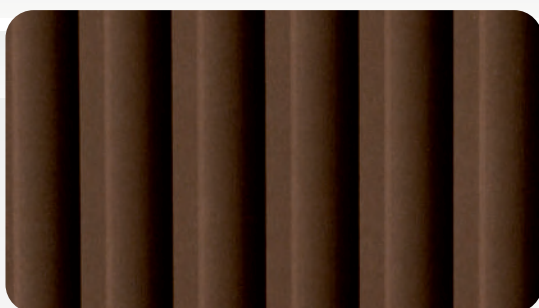
**CT 16**  
Copper Magnum



**CT 15**  
Silver Magnum



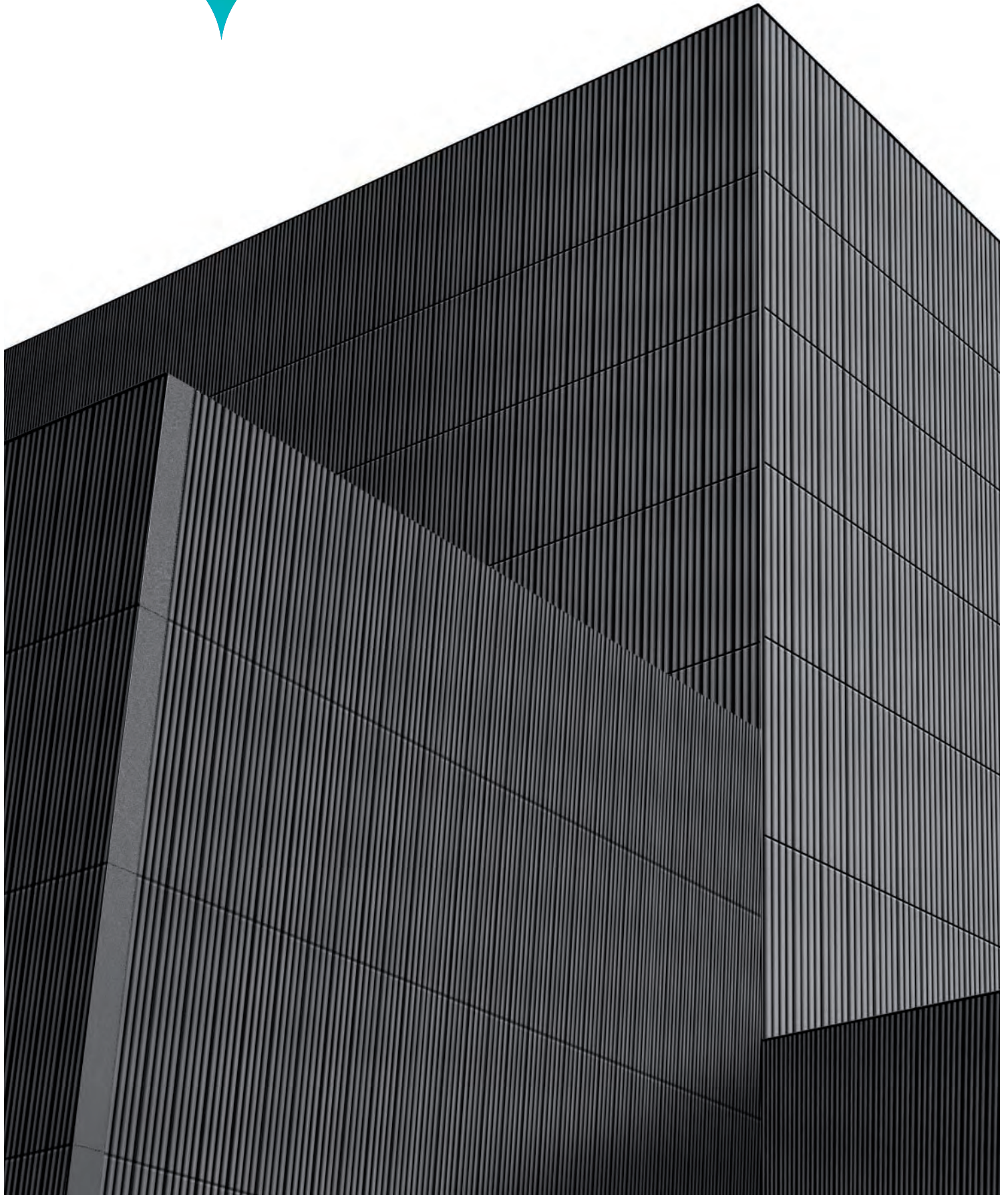
**CT 12**  
Tenor Magnum



**CT 11**  
Copper



STRUCTURED ELEGANCE



# REGAL LINES



**CT 10**  
Metallic Black

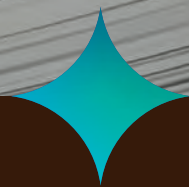


**CT 09**  
Exotic Silver





# ZINCHO



Zincho draws inspiration from the elemental strength of zinc and the raw appeal of metallic finishes. Defined by bold textures and muted industrial hues, this series is tailored for spaces that demand both edge and elegance. It reflects a modern, structured aesthetic—minimal yet impactful—perfect for architectural expressions that challenge convention.



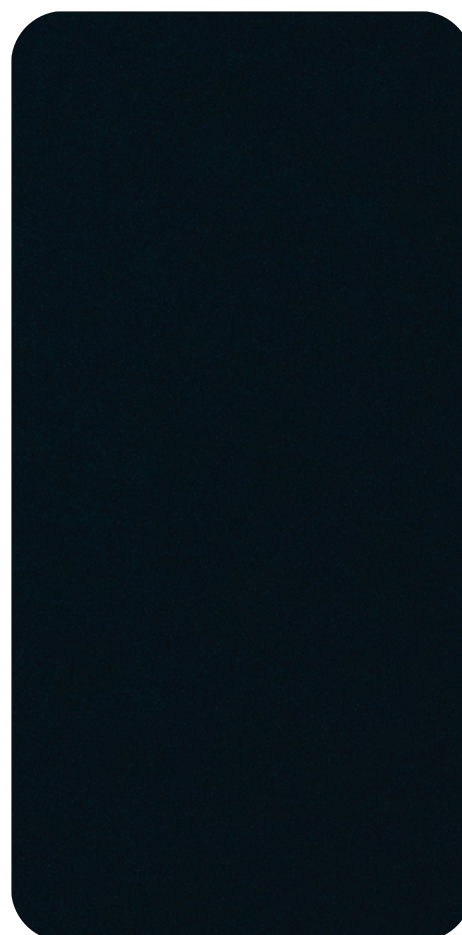
**ZC 01**  
Zincho Red



**ZC 02**  
Zincho green



**ZC 04**  
Zincho Brown



**ZC 03**  
Zincho Blue



LUSTROUS CORE

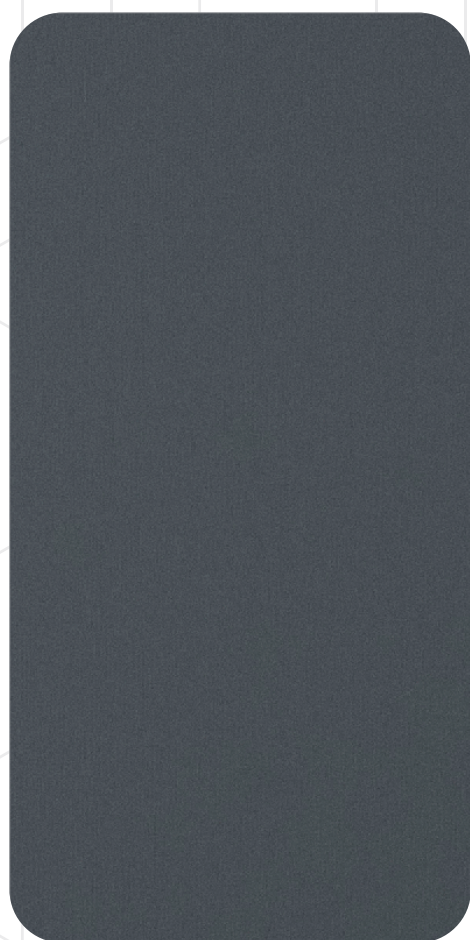


**ZINCHO**

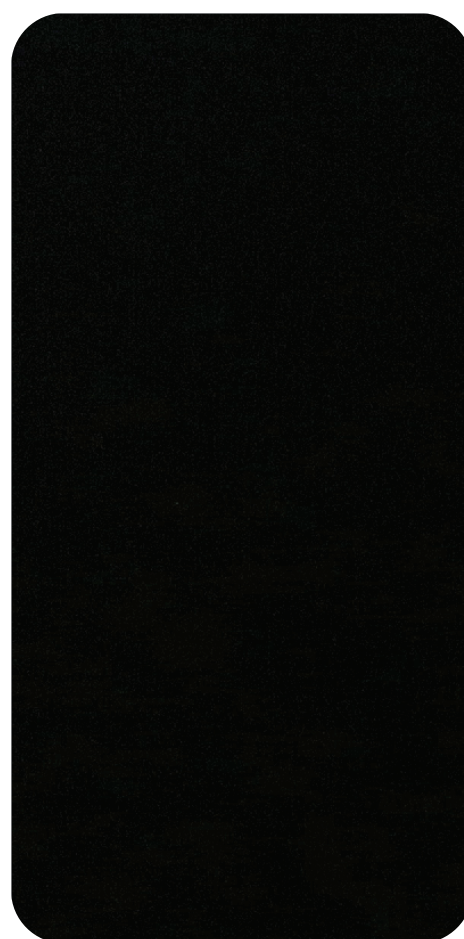
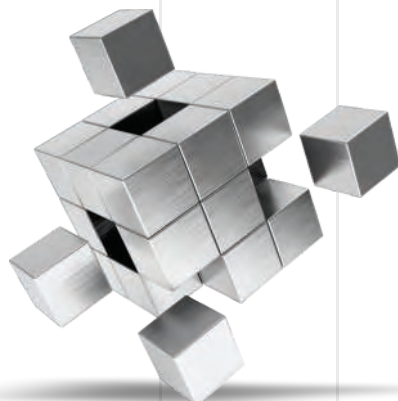
SERIES

Zinc-alike ACPs

# REFINED RAWNESS



**ZC 05**  
Zincho Grey



**ZC 06**  
Zincho Charcoal



## Our Other Available Series

### HERITAGE

<p><i>AludecoR</i> <b>GRANICIA</b> SERIES Terrazzo Inspired ACPs</p>	<p><i>AludecoR</i> <b>MASON MARK</b> SERIES Masonry Inspired ACPs</p>	<p><i>AludecoR</i> <b>EARTHCOAT</b> SERIES Timeless Terracotta Crafts</p>
--	---	---

### NATURE

<p><i>AludecoR</i> <b>ACE</b> SERIES 6 mm ACPs</p>	<p><i>AludecoR</i> <b>TIMBER</b> SERIES Wood-like ACPs</p>	<p><i>AludecoR</i> <b>PEDRA</b> SERIES Stone-finish ACPs</p>	<p><i>AludecoR</i> <b>SAND</b> SERIES World's first sand-finish ACPs</p>	<p><i>AludecoR</i> <b>RUSTIC</b> SERIES Next-to-Nature ACPs</p>
--	--	--	--	---

### REGULAR

<p><i>AludecoR</i> <b>SOLID</b> SERIES Solid Shades with Lasting Strength</p>	<p><i>AludecoR</i> <b>GLOZ</b> SERIES Vibrant and dynamic ACPs</p>	<p><i>AludecoR</i> <b>BRUSHED</b> SERIES ACPs with master strokes</p>
<p><i>AludecoR</i> <b>SPARKLING</b> SERIES Glitter-effect ACPs</p>	<p><i>AludecoR</i> <b>MIRROR</b> SERIES Super-reflective ACPs</p>	

## Also Available In

<p><i>AludecoR</i> <b>Fire Wall A2</b> Fireproof MCPs</p>	<p><i>AludecoR</i> <b>ARMOR</b> SERIES Anti-insect ACPs</p>	<p><b>Vi-SECURE</b> Anti-microbial ACPs</p>
---	---	---

# TECHNICAL SPECIFICATIONS

Particulars	Product Composition			
	AL 63	AL 45	AL 43	AL 33
Product grade	AL 63	AL 45	AL 43	AL 33
Total thickness of the panel	6 mm	4 mm	4 mm	3 mm
Thickness of the aluminium skin (Top skin/ bottom skin)	0.25 mm	0.50 mm	0.25 mm	0.25 mm
Thickness of LDPE/Mineral Core	5.5 mm	3 mm	3.5 mm	2.5 mm
Grade of aluminium skin	AA1100 (Supplier: Hindalco)	AA3105 / AA5005* (Supplier:Hindalco)	AA1100 (Supplier: Hindalco)	AA1100 (Supplier: Hindalco)
Coating Thickness (Front Coil) Wabi Sabi	40μ - 60μ (Three Coat Paint System) <b>Suppliers:</b> AkzoNobel/PPG/ Beckers/Nippon	40μ - 60μ (Three Coat Paint System) <b>Suppliers:</b> AkzoNobel/PPG/ Beckers/Nippon	40μ - 60μ (Three Coat Paint System) <b>Suppliers:</b> AkzoNobel/PPG/ Beckers/Nippon	40μ - 60μ (Three Coat Paint System) <b>Suppliers:</b> AkzoNobel/PPG/ Beckers/Nippon
Coating Thickness (Front Coil) Cortina	25μ - 35μ (Three Coat Paint System) <b>Suppliers:</b> AkzoNobel/PPG/ Beckers/Nippon	25μ - 35μ (Three Coat Paint System) <b>Suppliers:</b> AkzoNobel/PPG/ Beckers/Nippon	25μ - 35μ (Three Coat Paint System) <b>Suppliers:</b> AkzoNobel/PPG/ Beckers/Nippon	25μ - 35μ (Three Coat Paint System) <b>Suppliers:</b> AkzoNobel/PPG/ Beckers/Nippon
Coating Thickness (Front Coil) Zincho	30μ - 40μ (Three Coat Paint System) <b>Suppliers:</b> AkzoNobel/PPG/ Beckers/Nippon	30μ - 40μ (Three Coat Paint System) <b>Suppliers:</b> AkzoNobel/PPG/ Beckers/Nippon	30μ - 40μ (Three Coat Paint System) <b>Suppliers:</b> AkzoNobel/PPG/ Beckers/Nippon	30μ - 40μ (Three Coat Paint System) <b>Suppliers:</b> AkzoNobel/PPG/ Beckers/Nippon
Coating Thickness (Front Coil) Rugged Metal	30μ - 50μ (Quad Fusion Coating Technology) <b>Suppliers:</b> AkzoNobel/PPG/ Beckers/Nippon	30μ - 50μ (Quad Fusion Coating Technology) <b>Suppliers:</b> AkzoNobel/PPG/ Beckers/Nippon	30μ - 50μ (Quad Fusion Coating Technology) <b>Suppliers:</b> AkzoNobel/PPG/ Beckers/Nippon	30μ - 50μ (Quad Fusion Coating Technology) <b>Suppliers:</b> AkzoNobel/PPG/ Beckers/Nippon
Coating Thickness (Back Coil)	4μ - 7μ Service Coat	4μ - 7μ Service Coat	4μ - 7μ Service Coat	4μ - 7μ Service Coat

Product Tolerance	Width	Length	Thickness		Squareness	Bow	
			Coil	Panel		AL 45	AL 63, AL 43 & AL 33
	± 2.0 mm	± 4.0 mm	± 0.03 mm	± 0.2 mm	Maximum 5.0 mm	Maximum 0.5% of width and/or length	Maximum 0.8% of width and/or length

\*Conditions Apply

# Aludecor<sup>®</sup>

Metal Composite Panel

## Aludecor Lamination Pvt. Ltd.

### Head Office - Kolkata

Martin Burn Building, Suite 52, Floor 5, 1, R. N. Mukherjee Road,  
Kolkata – 700001, West Bengal, P: +91 33 4027 6600

### Works - Haridwar

#### (Unit 1)

Plot 95/96/97, Sector V, IIE Sidcul,  
Ranipur, BHEL Haridwar,  
Uttarakhand - 249403  
P +91 1334 239 343

#### (Unit 2)

Plot 31A, Sector 11,  
IIE Sidcul, Ranipur,  
BHEL Haridwar,  
Uttarakhand - 249403

#### (Unit 3)

Industrial Plot No. 23, Industrial  
Park IV Begampur Pargana,  
Roorkee, Haridwar,  
Uttarakhand - 249405

☎ Toll Free 1800 102 0407 🌐 info@aludecor.com 🌐 www.aludecor.com

**ZONAL OFFICES** - Chennai | Mumbai | New Delhi

**BRANCH OFFICES** - Ahmedabad | Bangalore | Calicut | Guwahati | Hubli | Hyderabad |  
Indore | Jaipur | Kochi | Lucknow | Patna | Pune | Vijayawada | Zirakpur

### OFFICES - OVERSEAS

**(USA) Texas** : 13201 Northwest Freeway, Suite 800, Houston, TX - 77040, USA  
info@aludecor.us | www.aludecor.us | P: +1 716 903 4126

**(Germany) Hamburg** : Bei den Mühren 1, Hamburg - 20457, Germany  
info@aludecor.com | www.aludecor.com

**(Spain- Partner) Murcia** : San Javier, RM19-Km1 Polígono Industrial Cartago,  
Baños y Mendigo, Murcia - 30155, Spain  
info@aludecor.com | www.aludecor.com | contacto@aludecor.es | www.aludecor.es

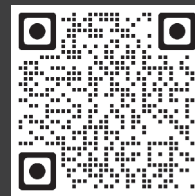
**CIN : U27203WB2004PTC099221**

A percentage of the proceeds from our sales is forwarded towards welfare purposes.

Follow us on



WORLD'S MOST TESTED MCP BRAND  
**205**  
TESTS



SCAN QR CODE  
FOR ENQUIRY